

# EzWedge



## Table of contents

---

EzWedge .....	3
Install EzWedge (Note: If not using DHCP then refer to the section on Setting up the IP Address for Your Scanner) .....	4
Setting up the IP Address for Your Scanner .....	8
Driver Install for Ethernet Adapter .....	12
Procedure .....	12
Exit the Vista App Screen and go to the Desktop by following this procedure: .....	13

## EzWedge

This program has been developed to allow both wireless or wired data transfer between an Intermec/Honeywell Device and a PC. EzWedge is a good replacement option for Windows Mobile Device Center (WMDC) since it makes use of an Ethernet connection rather than a USB connection and does not use WMDC for its connection to the PC.

There are several requirements that have to be met in order for EzWedge to work with a PC.

1. Must use the latest version of Maximo/Vista Scanners with the Options Program installed.
2. Must have an Ethernet Module installed on the dock and plugged into the same network as the PC is connected to.
3. Install and setup EzWedge on the PC where you wish to transfer data.
4. Setup IP address and port in Options Program menu of the each scanner to match EzWedge.
5. If not using DHCP on the scanner, then you will have to assign a IP address to each scanner.

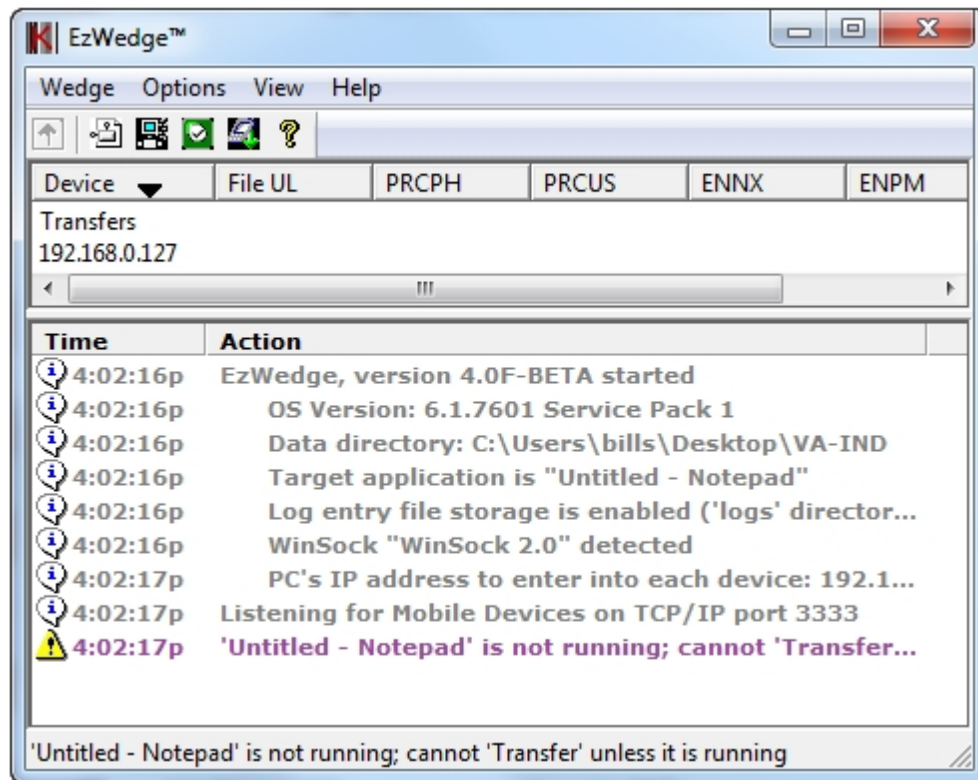


*Example of an Ethernet Module Hookup*

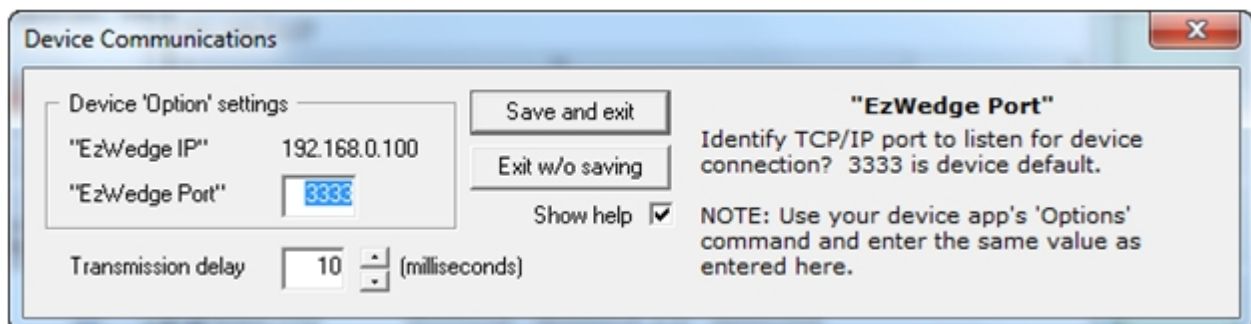
## Install EzWedge (Note: If not using DHCP then refer to the section on Setting up the IP Address for Your Scanner)

Install EzWedge on the PC you will be using to interact with VISTA or Maximo. No other program is necessary other than EzWedge. Start the program once installed and follow the steps below:

1. Start EzWedge

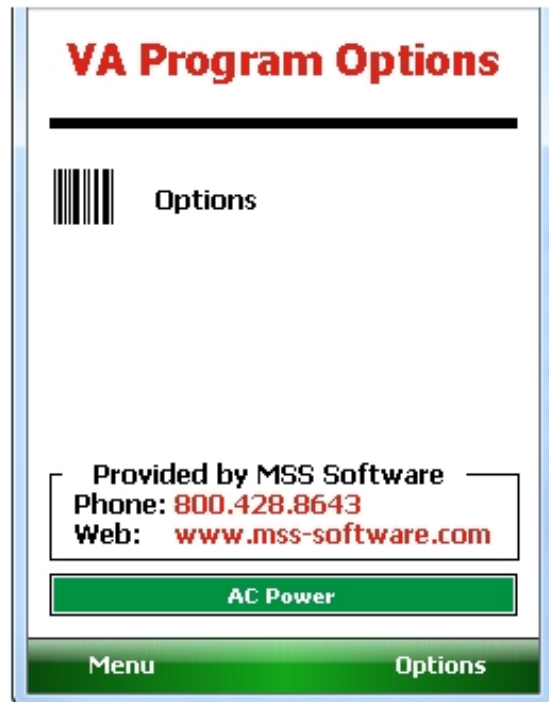
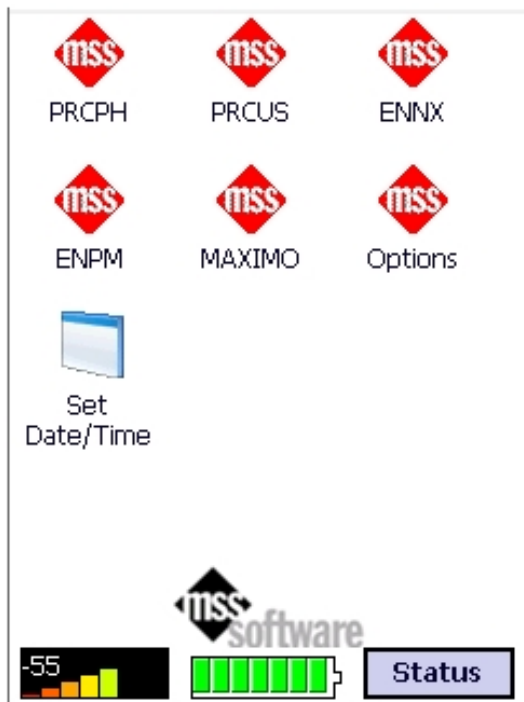


2. You may notice that “Action” screen will show a little warning sign that the Target App (for example, Notepad) is not running and there can be no data transfer. Your Target app will eventually be Vista. However, during testing, you should make Notepad the Target.
3. The other thing you need to look for is in the action column where it lists the PC's IP address (may have to widen the screen). You can also find this by clicking on Options|Device Communications. Make note of this because you need to put this IP address in your scanner devices so that they can communicate.

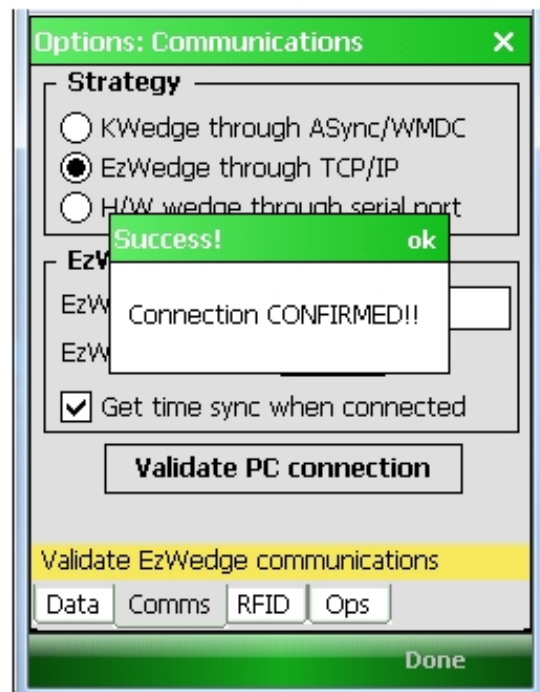
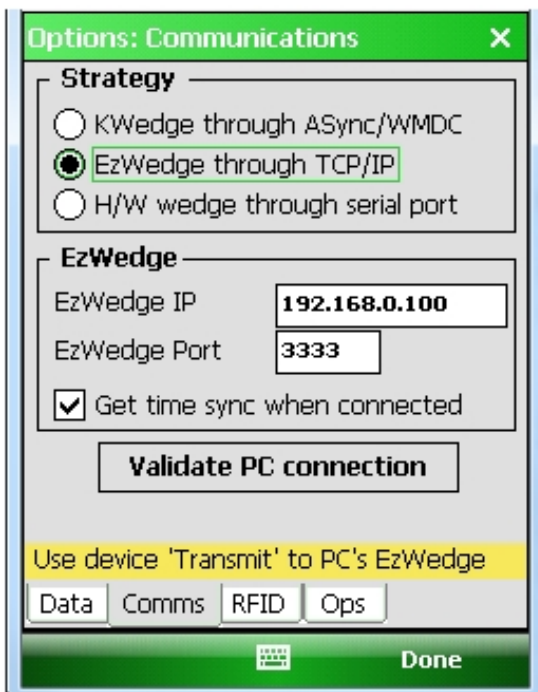


4. Now go back to the Main Menu of the Scanner and Pick Options, then Options again and type in the password 00000.



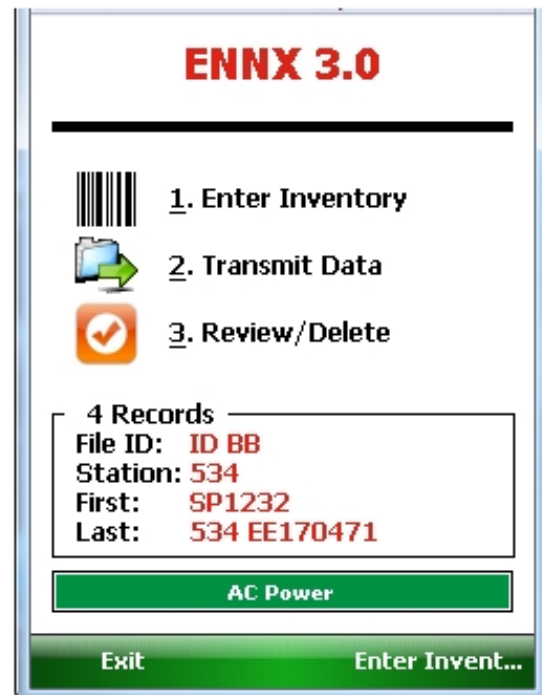
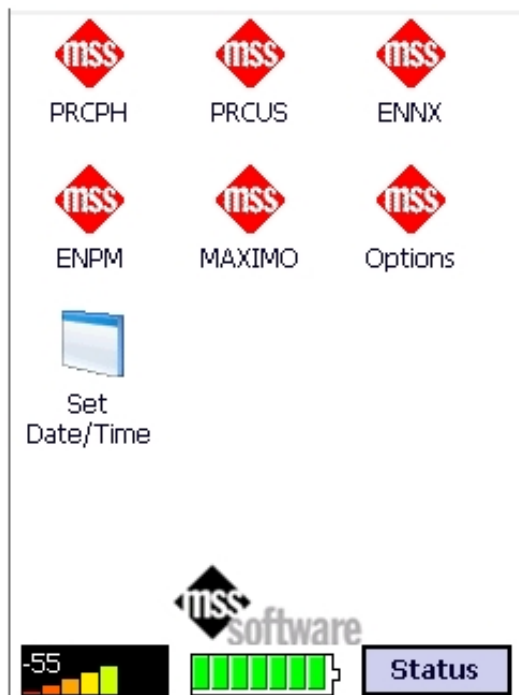


5. After you type in the Password, then you will click on OK and then click on the "Comms" tab. In the EzWedge Portion you will put in the IP Address of the PC that you found through EzW earlier. Before you click on **Validate PC Connection**, attach the Ethernet Adapter to the side of the Dock and attach an Ethernet cable from your network to it. Make sure that the USB cable is **NOT** plugged in. Now set the scanner into the dock and wait a few minutes for your server to assign it a IP Address. Then click on the **Validate PC Connection**.

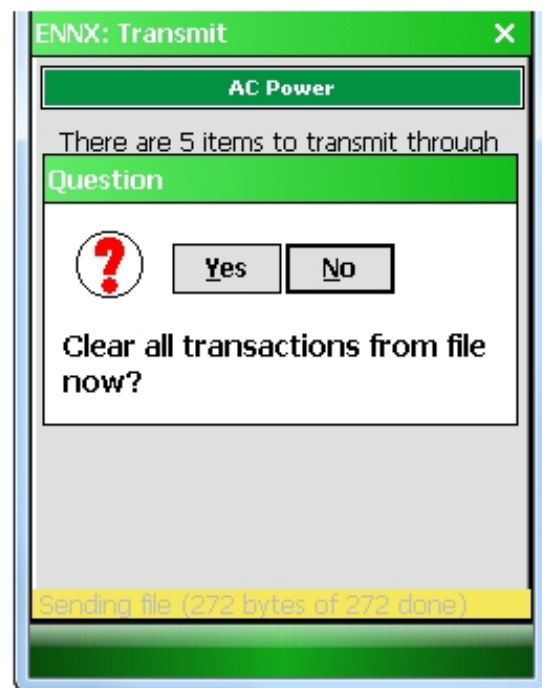
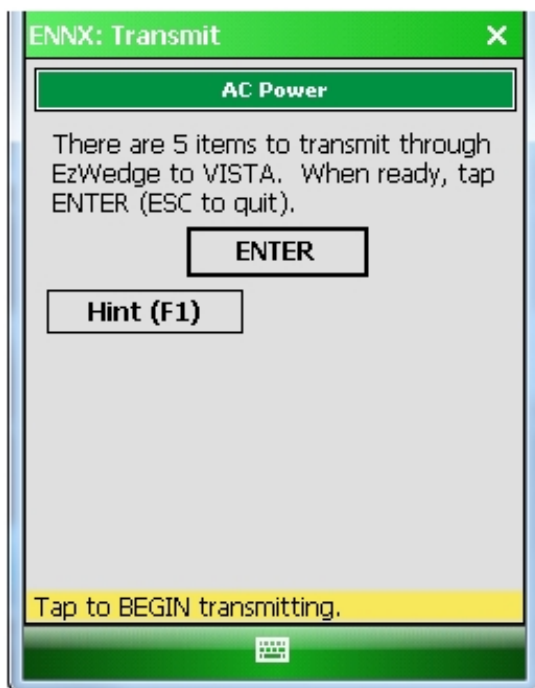


6. This will confirm if you have a good connection to transfer data or not. If you have success then you can move onto the next portion of actually trying to transfer data from one of the programs such as ENNX. Go ahead and save your settings and click Done, then Menu, and then Exit. This will put you back again to the Main Menu.
7. At Main Menu, click the program of your choice and collect some data. When finished Esc back to the

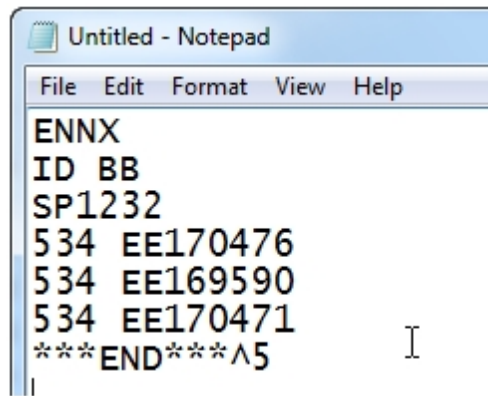
prompts to Transmit Data.



8. Select 2. Transmit Data. Then make sure your scanner is in the Dock and then click on Enter when ready.



9. The data will be transferred into Notepad and you will see it appear:

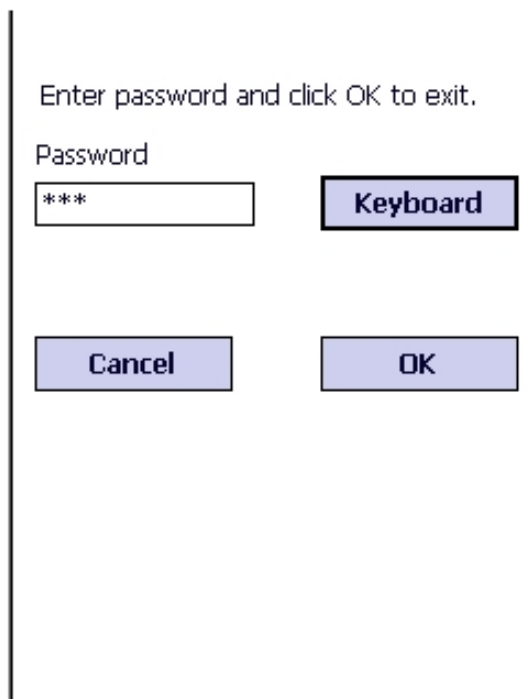
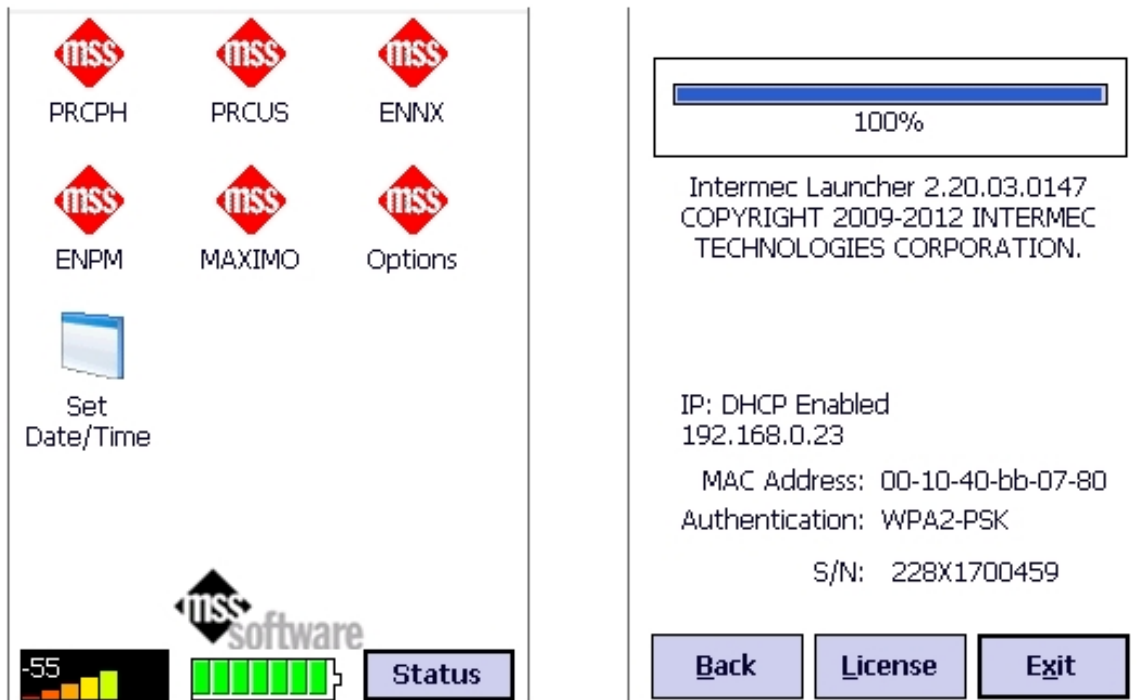


10. We recommend that you now change the target to VistA and navigate to where VistA is ready to receive data from the scanner, then send the data again just to be sure everything is working correctly.
11. If everything worked OK, then you are ready to move to the Wireless setup which is really no different than wired Ethernet. This may or may not be allowed in your facility.
12. To Setup WiFi, you will need special permission from IT and instruction from MSS Software. Please call us.

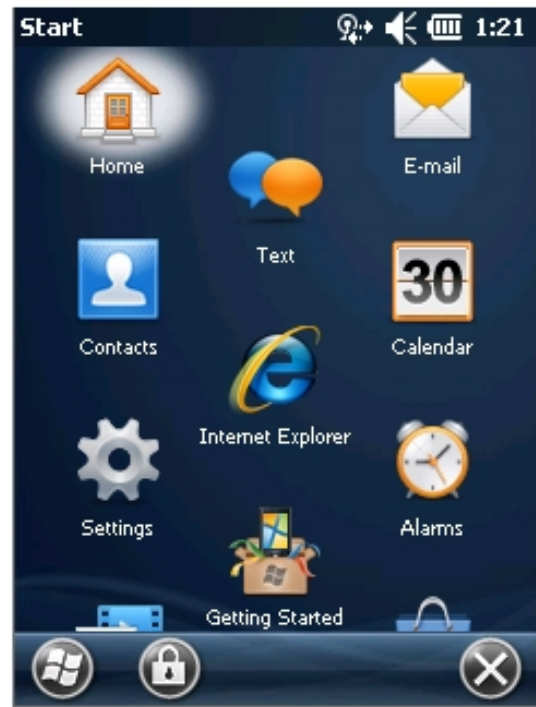
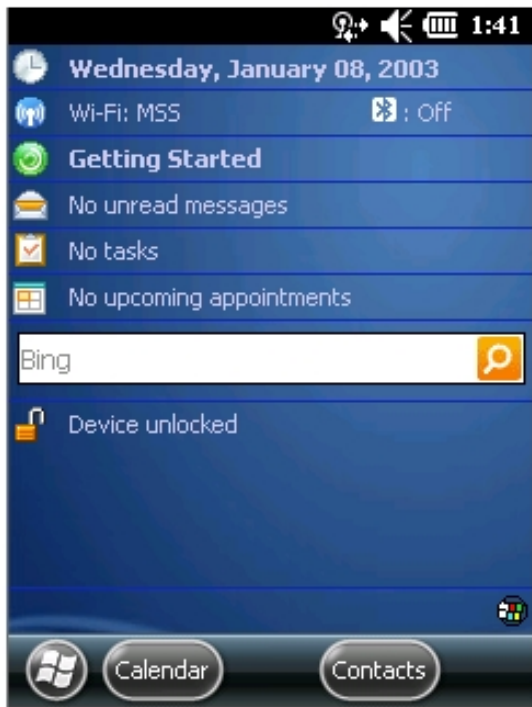
## Setting up the IP Address for Your Scanner

If you are not using DHCP and need to assign an IP address to the CK3 or CN51 then you will need to exit the Launcher and set that up.

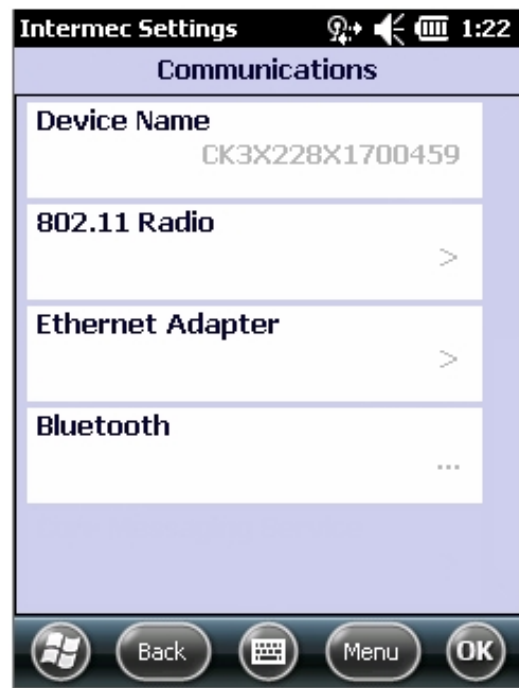
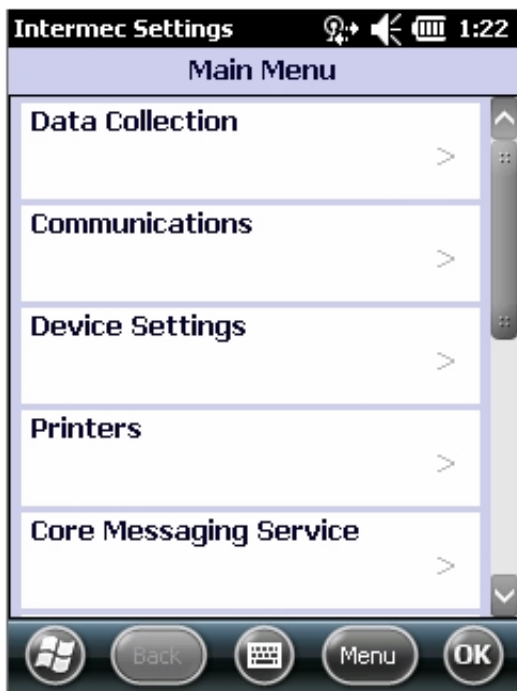
First, go to the main menu where all the apps are shown and select Status then Exit. Enter the Password (123) to Exit.



From the Windows Desktop, Select the Windows Flag, then Settings, System and then Intermec Settings.

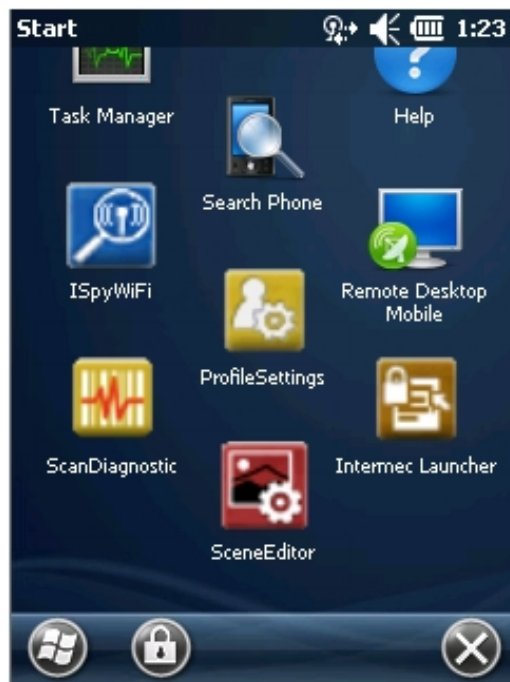


From the Main Menu select Communications then Ethernet Adapter and IP Settings.



You will uncheck DHCP and add an IP Address and Subnet Mask and Default Router, etc. Save the Settings and go back into Intermec Launcher or simply reboot the device.





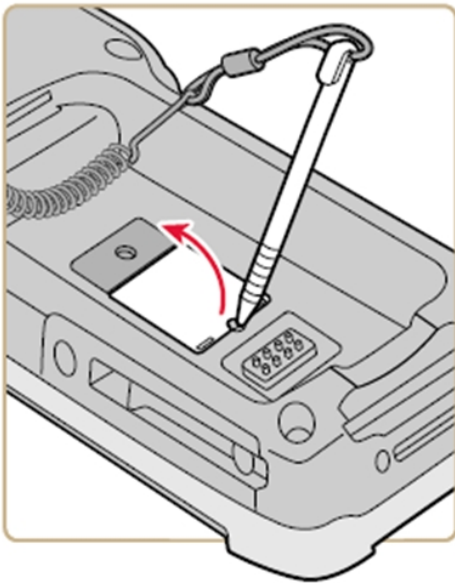
## Driver Install for Ethernet Adapter

First determine which adapter you have...

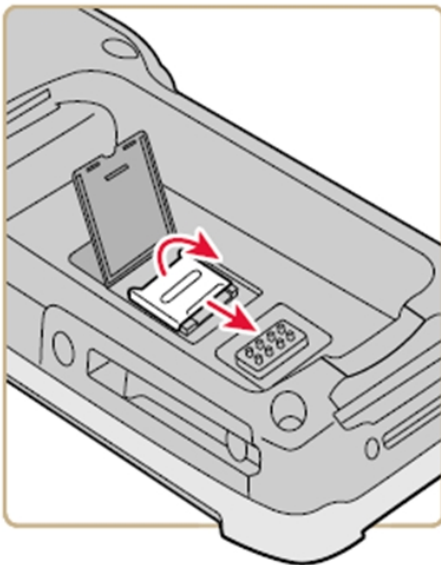
- P/N: 871-238-011 Driver Necessary for CK3A or B Only (CK3X works automatically)
- P/N: 871-238-012 Install Driver in Folder 012 Only Works for CK3X, CN51 or CN7X

### Procedure

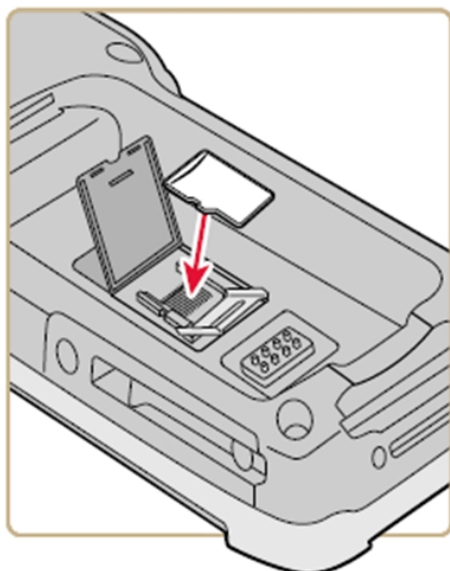
1. Take battery out of Barcode Reader.
2. Find SD card slot door (remove door on CK3A and B).
3. Open the card cover door



4. Slide the microSD card cover towards the OPEN position and lift the cover.



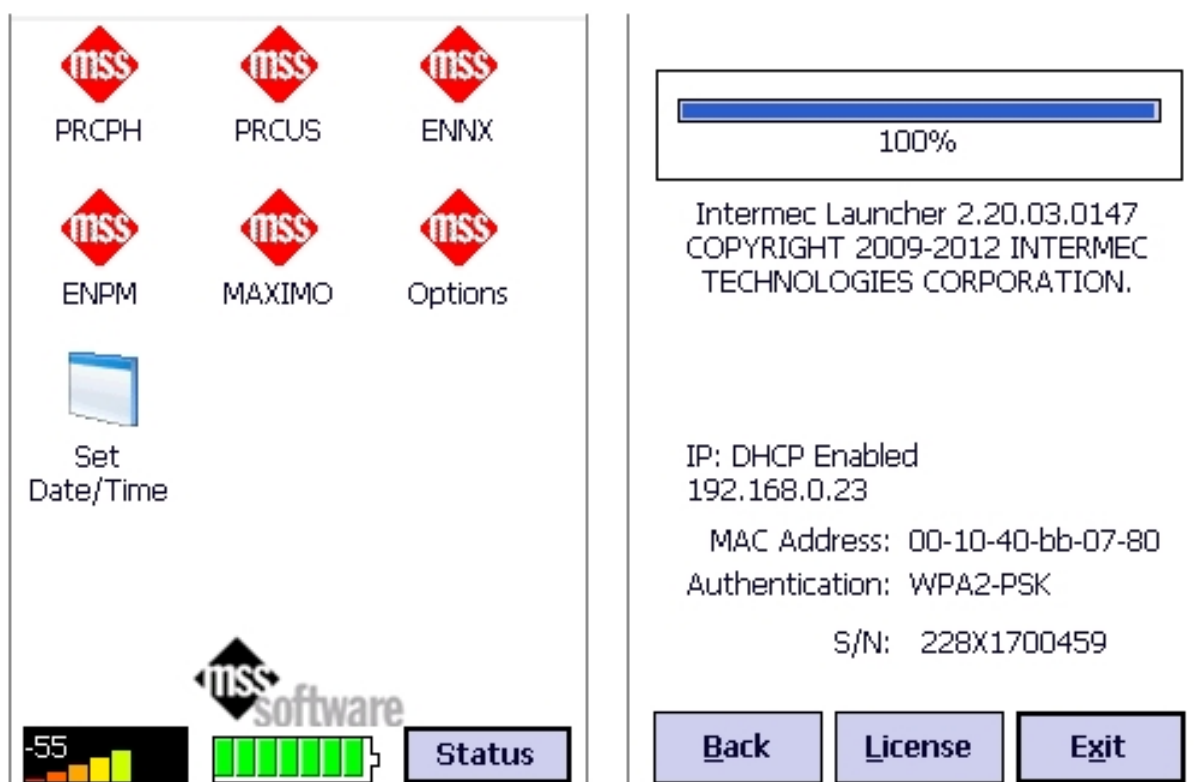
5. Insert the microSD card.



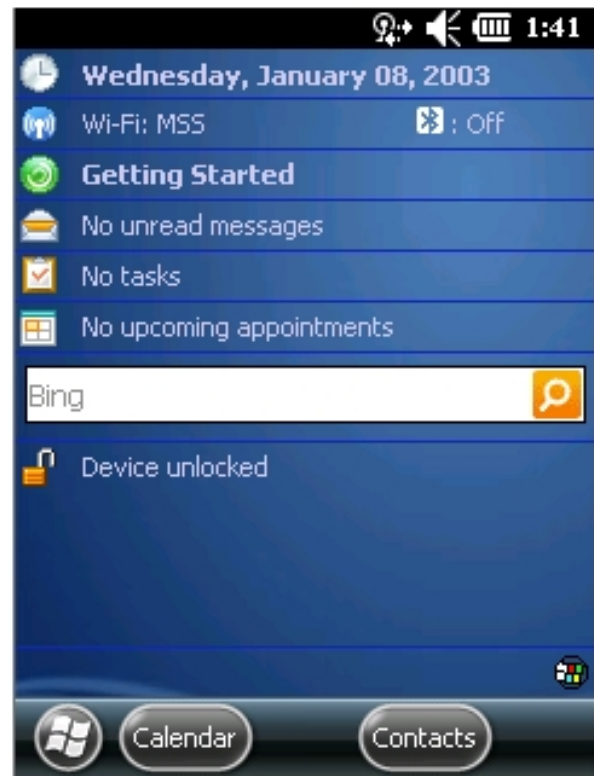
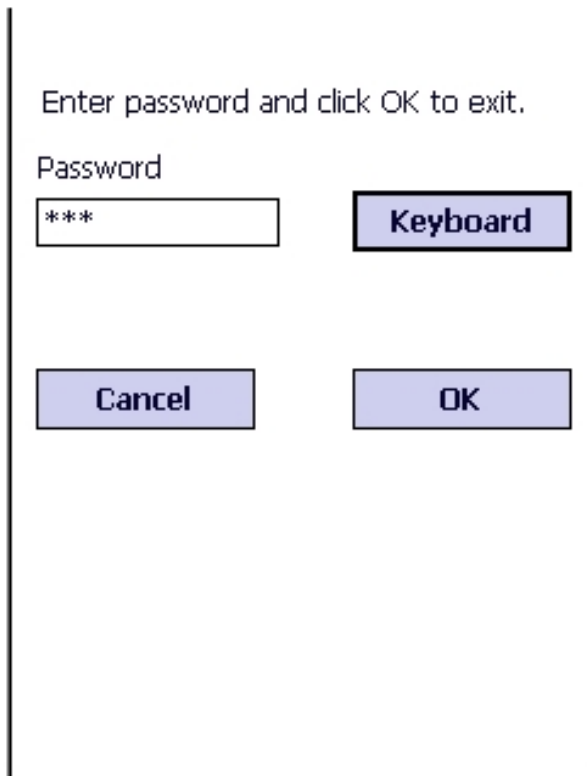
6. Close the microSD card cover and slide it towards the LOCK position.
7. Close the card cover.

Make sure the card is placed in the SD card holder snugly and close the door carefully. Put the battery back in the unit and turn the unit on.

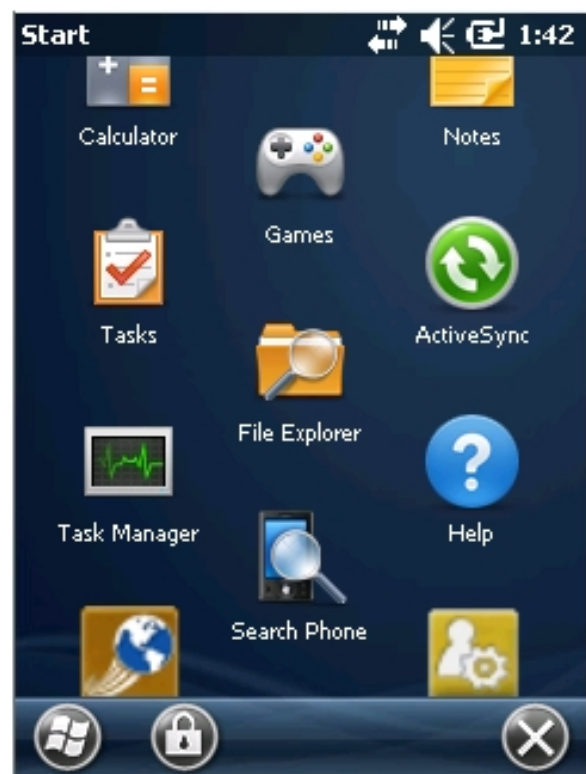
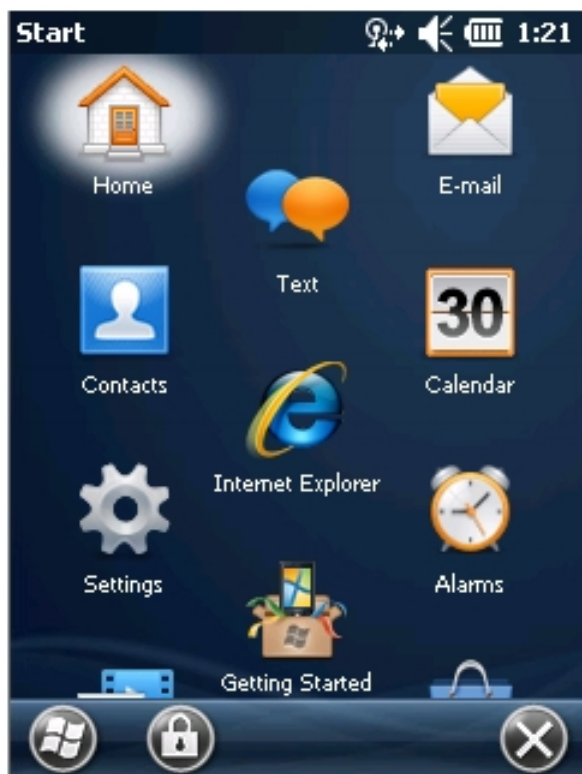
**Exit the Vista App Screen and go to the Desktop by following this procedure:**



Click Status and then License and enter the password is 123 and then use the stylus to click on the OK.



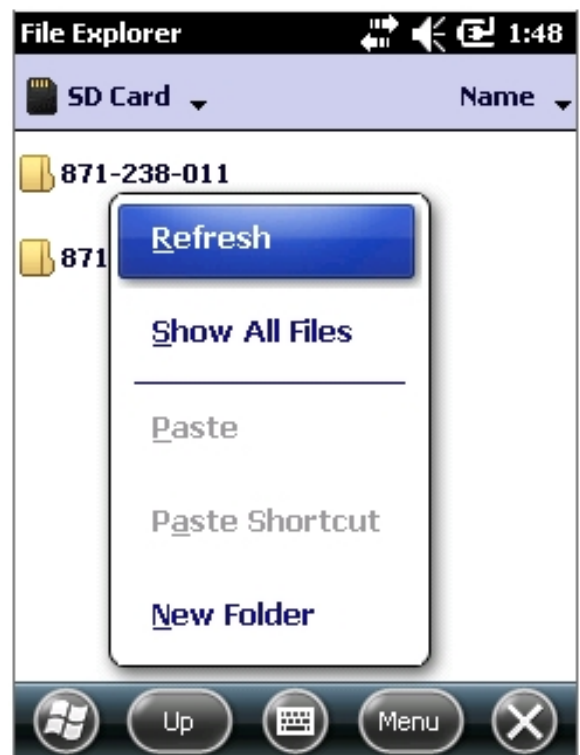
Select the Windows Flag logo or Start on the screen. When you get to the icons you will need to use your stylus to scroll down the screen to find File Explorer.



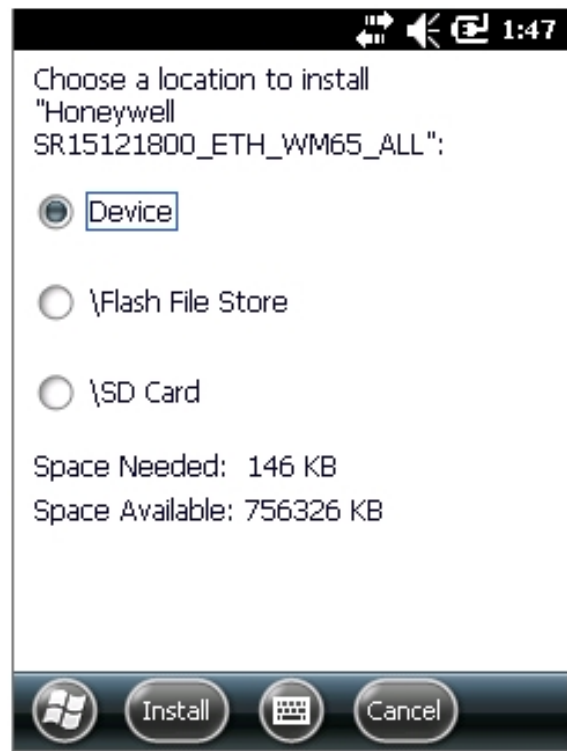
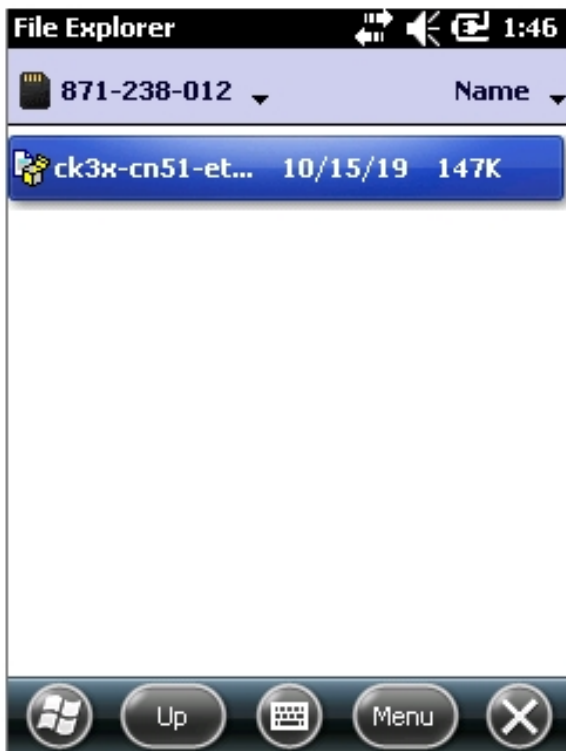
Click on File Explorer and navigate to the SD Card.



It may be necessary when you get to the SD Card to hold the stylus on the screen until you get a message where you can click on "Show All Files" since sometimes they are hidden.



Click on the correct folder for your Ethernet adapter and then click on the file to install in that folder. Install to the Device.



Once you get a success then you can click the OK on the screen and the unit will reboot. If the Ethernet light on the Adapter flickers then you have a good connection.

If you ever lose connection because of a “Clean boot” or factory reset, repeat these instructions to reload the driver.

Next, follow instructions for setting up EzWedge.